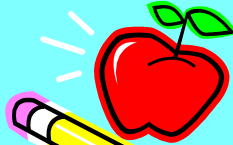




1ST GRADE NEWS



Marguerite Vann
August 25, 2017

First Grade Classroom Newsletter

Math

We are excited to begin using Eureka Math curriculum in first grade. Each lesson includes fluency practice, concept development, application problems, and student debriefing. Every lesson builds upon the previous concepts taught. Students have been energized and enthusiastic about math time each day! Math homework will be sent home on Tuesdays and students will have until Friday to complete and return their work. Thank you!

What We Are Learning

- **Reading/Phonics:** Narratives, punctuation and capitalization, concepts about print
- **Spelling Practice Rule:** A vowel in a closed syllable is short.
- **Sight Word/Red Bird Word Practice:** the, was
- **Math:Counting on from Embedded Numbers**

If you have not already, please send \$2.50 for your child's writing journal. This was on the beginning of the year supply list.



Dates to Remember

No School- Labor Day

- Monday, September 4

Community Open House

- Sunday, September 10 @ 2:00-3:00

Faulkner County Fair Parade

- Tuesday, September 19 @ 5:00pm

Science Based Spelling Curriculum

This year Conway Schools is implementing a new spelling curriculum called Connections in first grade. This curriculum focuses on teaching children to spell using spelling rules, for example next week's rule is: A vowel in a closed syllable is short. Each week students will learn the spelling rule and a few "red bird" words. Red bird words do not follow any spelling rules and are taught using multisensory techniques. Teachers will be monitoring throughout the week for student understanding. On Friday we will use an assessment to determine which students have mastered the rule and which students need more practice. This assessment will not be for a grade. Word list for next week:

Win
Hot
Bug
Big
Job
Cut

If you ever have any questions or concerns, please feel free to contact your child's teacher at dennia@conwayschools.net ortegal@conwayschools.net, williama@conwayschools.net or 501-450-4870.